

# Entity Relationship (ER) diagram for the "js" database



Information about the methods for buying (e.g.: in-store and by telephone)

Information about methods of payment such as cash, check, and credit card

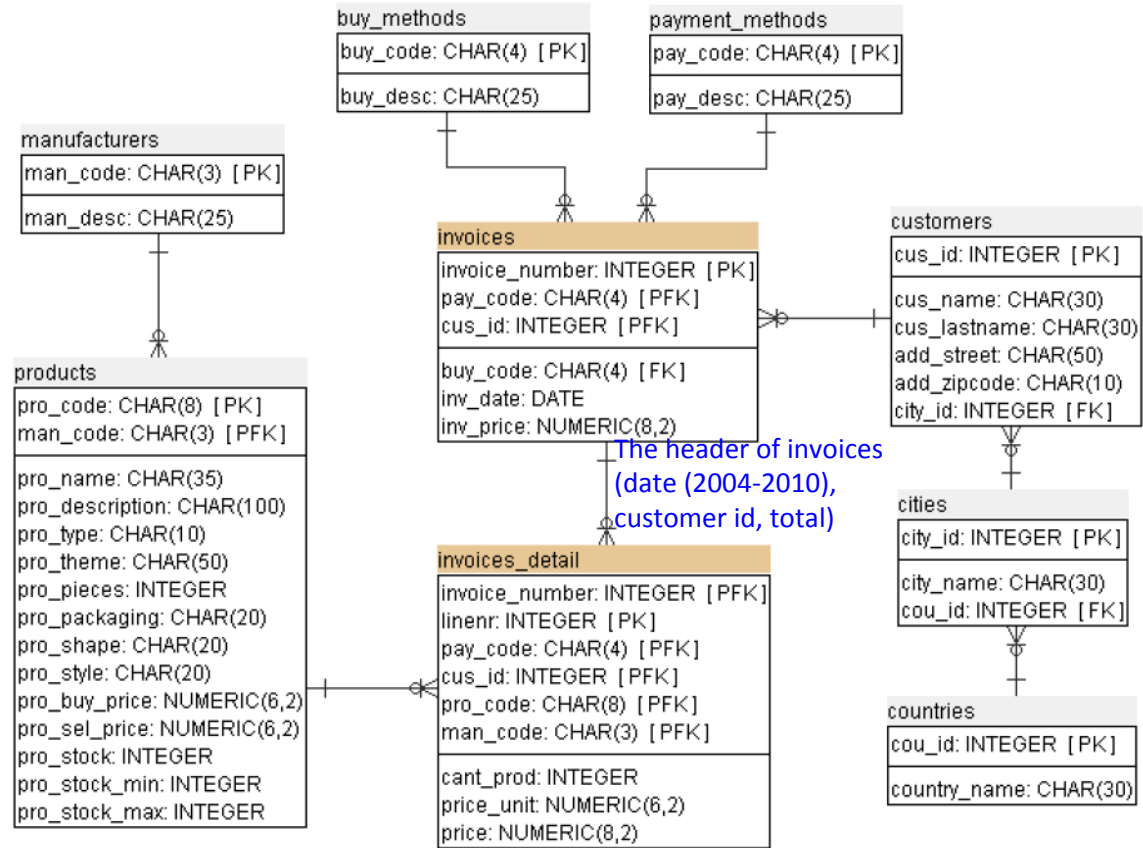
Information about manufacturers of the products

Information about products (prices and stock)  
 - "pro\_type" represents the type of product (puzzle, glue, ...)  
 - Several of the columns only apply to puzzles (e.g. shapes or pieces)

List of customers (a customer has a number, a name, and an address)

List of cities

List of countries



Detail of the invoices including invoice number, product, quantity, and price.